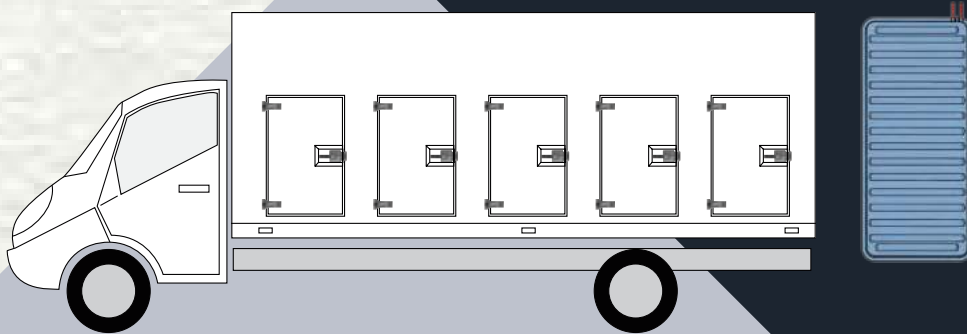




**Eutectic®**

[www.eutectic.com.tr](http://www.eutectic.com.tr)

WE STRONG TOGETHER





## IMPROVED TRANSPORT EFFICIENCY AND PROFITS FOR OUR CUSTOMERS

Our goal: Make your transportation more  
cost-effective

## ABOUT US



**Antalya Factory / 42.000 m2**

ATC is a leading company for 10 years in the field of Eutectic plates, Eutectic Refrigerated Bodies for the distribution of ice cream and frozen food.

We also provide refrigerated trailers, reefer trailers, container chassis (container trailers) and turnkey solutions. We produce our goods with European standards and export to 60 countries worldwide.

We are also an experienced company on Plant Set-Ups, Factory Designs, Paper Machinery Production and Robotic Systems.

“

*We have great quality,  
Because the others  
start from zero and we  
start from - 40°C*



**Adana Factory / 1800 m2**

## THE COMPANY VALUES

**We believe to use the  
new technology in production**



### **CNC Tube bending Machine**

CNC serpentine tube benders are designed for production use. For serpentine tube bending without the need to rotate the material between bends (R axis plane rotation). Program the bend angles, centerline radius, straight lengths, and serpentine production begins. The tubing always stays in contact with the support table maintaining flatness.



### **Hydraulic Deep Drawing Press**

Our deep drawing presses work with hydraulic drive and servo axis, hydraulic drawing cushions in the upper and lower part as well as well with pressing forces of up to 500 tons. Innovative technology and highest precision.



### **Thermal Metallization Machine**

The molten metal is then atomised with compressed air to create a spray stream that applies the coating onto the surface being sprayed. Anti-corrosion and coatings thermal spray. Metallisation have a full range of thermal spray systems for hand-held and fully automatic / robotic applications.



### **Robotic Seamer**

Speed-Weld™ High Speed Seam Welding Robot Seam-Weld is a revolutionary new variation of the resistance welding process known as Resistance Seam Welding (RSW). Using Seam-Weld current is intermittently passed between rotating electrode wheels creating a high strength and leak tight continuously welded seam. Speed-Weld technology creates leak tight hermetically sealed joints ideal for fuel tanks and other fluid containment vessels.



### **Orbital Multi Welding Machine**

**EASY HANDLING**  
We use simple and easy-to-use standard parts for all our orbital welding heads. This is ideal for those taking their first steps in the world of orbital welding. Our open welding heads all feature a device for tracking the out-of-roundness of tubes and are available with either an air- or a water-cooling system.



## GLOBAL BROADCAST



**We Export %95 of  
our production  
Main Regions We Export to:**

Eutectic Car (ATC) has reached to many countries of the world and has become the leader in the production of refrigerated truck bodies and it has covered the distance by means of technology, solidity and efficiency.





# BUSINESS UNIT

## Eutectic Plates

ATC eutectic plates consists of two alloyed steel cold formed and moulded, containing a special solution that freezes and melts at a constant temperature (eutectic point).

The external surface of the steel is covered with Thermal metalization with Alu-zinc sprayed by a special designed robot.  
Inner Serpentine system without welded innovated by ATC in worldwide and Unique system.

Ice cream, frozen food, fresh and multitemperature food transportation  
An electrical power supplied cooling unit freezing the eutectic systems.  
The eutectic solution, while melting, returns the cold balancing the thermal dissipation of the body and the doors openings.

Product is preserved at the correct temperature according to EU Regulations.

**Using Area;** Refrigerated truck body, Yachting, Ship Vessels, Cold Storage.



# MODELS & DIMENSIONS

EUTECTIC PLATES									
Models		Dimensions (mm)			Surface	Evaporator		Solution (-40°C)	
Type	Codes	L	W	H	(m²)	Length (m)	Volume (dm³)	Accum (Wh.)	Weight (kg)
Standart	T-EFR 750	700	690	50	0,52	9,0	3,06	2160	29
	T-EFR 1370	1290	690	50	2,07	15,3	3,06	2160	57
	T-EFR 1570	1440	690	50	2,38	17,6	3,52	2890	72
	T-EFR 1670	1590	690	50	2,55	18,8	3,76	3100	77
	T-EFR 1757	1730	690	50	2,73	20,7	4,14	3300	85
Narrow	T-EFR 1370-S	1290	490	50	1,20	12,8	2,63	2100	38
	T-EFR 1570-S	1440	490	50	1,86	18,6	3,42	2890	44
	T-EFR 1670-S	1590	490	50	2,55	18,8	3,76	3040	54
	T-EFR 1757-S	1730	490	50	2,62	20,8	3,31	3100	62
Flat	EFR-FLAT 640	630	400	26	0,75	6,2	1,12	1010	25
	EFR-FLAT 763	770	630	26	0,95	6,8	1,28	1380	30
	EFR-FLAT 850	795	490	26	0,94	6,5	1,32	1020	28
	EFR-FLAT 1440	1480	400	26	1,62	12,2	2,85	1440	42
	EFR-FLAT 1663	1660	630	26	2,12	15,6	3,75	1610	54

## BUSINESS UNIT

### Refrigerated truck bodies

Eutectic Car (ATC) produces refrigerated truck bodies, with eutectic plates refrigerating system. Production is divided into two sectors, isothermal bodies and refrigeration systems:

The isothermal bodies are composed of laminated panels in polyester resin reinforced with fibreglass and core of polyurethane panels with a uniform density of 35 Kg/m<sup>3</sup>.

They are produced with lamination method, fibreglas and polyurethane sealed with a special glue which removes the need for any metal or plastic profiles, thus guaranteeing maximum insulation and high resistance to mechanical stress.

The refrigeration units, designed and manufactured for each body, accumulate refrigerant energy in special eutectic plates fitted inside the body, while an electrically powered refrigerant recharge unit is positioned outside the body, normally between the vehicle axles.



# MODELS & DIMENSIONS

Models	Dimensions (mm)			Inner Volume	Side Doors	Rear Door	Eutectic Plates	Comp. Power (HP)	Inner Separation	
	L	W	H						Without Rear Door	With Rear Door
Eutectic 2000	2200	1700	1550	4,05	2+2	Yes / No	3/4 pcs 1290 x 690 mm	2,5	Aluminium Separation	4 Trolleys
Eutectic 3000	3100	1900	1700	7,39	3+3	Yes / No	4/5 pcs 1440 x 690 mm	3	Aluminium Separation	6 Trolleys
Eutectic 3200	3250	1900	1700	7,77	3+3	Yes / No	4/5 pcs 1440 x 690 mm	3	Aluminium Separation	6 Trolleys
Eutectic 3600	3600	2100	1700	9,69	3+3	Yes / No	4/5 pcs 1590 x 690 mm	4	Aluminium Separation	6 Trolleys
Eutectic 3700	3700	2100	1700	9,98	3+3	Yes / No	5/6 pcs 1590 x 690 mm	4	Aluminium Separation	6 Trolleys
Eutectic 4100	4100	2100	1700	11,11	4+4	Yes / No	5/6 pcs 1590 x 690 mm	5	Aluminium Separation	8 Trolleys
Eutectic 4300	4300	2100	1700	11,68	4+4	Yes / No	6/7 pcs 1590 x 690 mm	5	Aluminium Separation	8 Trolleys
Eutectic 5000	5250	2100	1700	14,39	5+5	Yes / No	7/8 pcs 1590 x 690 mm	5	Aluminium Separation	10 Trolleys
Eutectic 6000	6250	2100	1900	17,24	5+5	Yes / No	8/9 pcs 1590 x 690 mm	7,5	Aluminium Separation	10 Trolleys

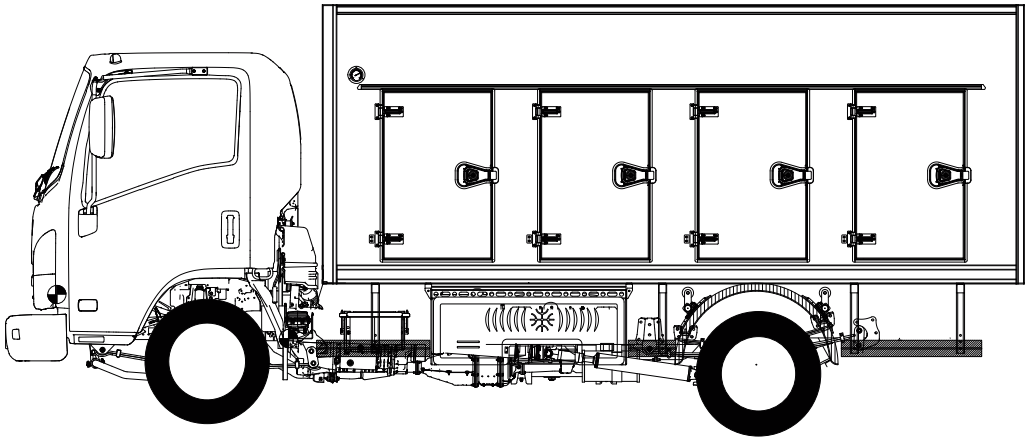
Note: Any dimensions can be produced by EUTECTIC upon customer requests.



# GENERAL SPECIFICATIONS

Part	Feature
Number of Side Doors*	4/6/8/10/12 Ecold side doors
Side Door Dimensions*	550 mm x 1055 mm / enable to custom design
Hinges	Chrome Steel and Stainless Steel
Locks	EUTECTIC Stainless Steel
Wall Thickness*	100mm (up to 150mm)
Insulation	Pre expanded CFC free polyurethane
Insulation Density	35-42 kg/ m²
Doors Freezing Proof	Up to 65 watt resistance
Rear Door*	Yes (double wing opening) / No
Temperature Gauge	EUTECTIC -40°C Thermometer
Drainage	Tubular Drainage System
Indoor Lighting	Led Light
Outdoor Lighting	Led Light / On corners of the body
Over Side Doors Rain Drain	Aluminium profile over side door
Side footboards	Stepped type side protector on both sides
Eutectic Plate Brand	EUTECTIC
Number of Eutectic Plates*	4 pcs / 5 pcs / 6 pcs / 8 pcs / 9 pcs
Compressor Brand	DORIN
Compressor Power*	2,5 HP / 3 HP / 4 HP / 5 HP / 7,5 HP
Refrigerating Equipments	DANFOSS Cooling Products
Subframe	Steel galvanized ready to be mounted on Truck
Body Lifting Hooks	Front and Rear sides of Body
Trolleys*	Strong and Easy Operation / Galvanized Steel
Separation*	Aluminium Separation / 4 - 6 - 8 - 10 - 12 Trolleys
Body Color	Ral 9010

\* Optional

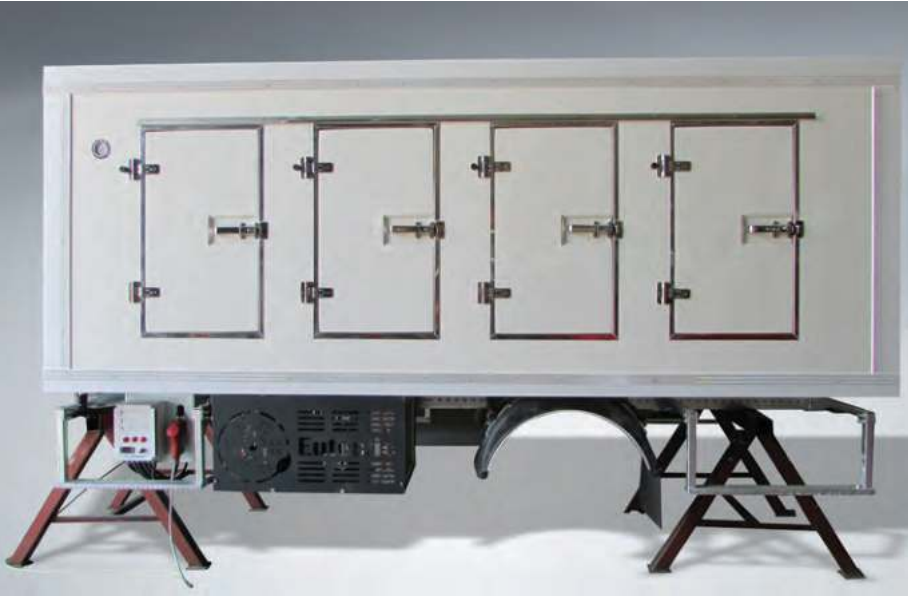




PRODUCT



Eutectic 3000	
Outer Dimensions (mm)	3100 x 1900 x 1700 mm
Inner Volume (m³)	7,39
Number of Side Doors	3+3 (6 Ecold side doors)
Number of Eutectic Plates	5 pcs (1440 x 690 mm)
Compressor Brand	DORIN
Compressor Power	3 HP
Subframe	Steel galvanized ready to be mounted on Truck
Separation	6 Trolleys



Eutectic 4100	
Outer Dimensions (mm)	4100 x 2100 x 1700 mm
Inner Volume (m³)	11,11
Number of Side Doors	4+4 (8 Ecold side doors)
Number of Eutectic Plates	6 pcs (1590 x 690 mm)
Compressor Brand	DORIN
Compressor Power	5 HP
Subframe	Steel galvanized ready to be mounted on Truck
Separation	Aluminium Separation



Eutectic 5000	
Outer Dimensions (mm)	5250 x 2100 x 1700 mm
Inner Volume (m³)	14,39
Number of Side Doors	5+5 (10 Ecold side doors)
Number of Eutectic Plates	7 pcs (1590 x 690 mm)
Compressor Brand	DORIN
Compressor Power	5 HP
Subframe	Steel galvanized ready to be mounted on Truck
Separation	Aluminium Separation



Multizone Eutectic MZ-40	
Outer Dimensions (mm)	4300 x 2200 x 2050mm
Inner Volume (m³)	10,43
Number of Side Doors	3+1 (1 Frigo side door)
Number of Eutectic Plates	5 pcs (1590 x 690 mm)
Compressor Brand	DORIN
Compressor Power	5 HP
Subframe	Steel galvanized ready to be mounted on Truck
Separation	4 Compartments



## INSULATED PANELS & DOORS

### Think green Insulated panels



Why choose PUR and PIR®?

PUR and PIR include the following properties:

- Unique insulation property = 0.023 W/m
- High stabilit
- Lightweight
- Easy to shape, laminate and coat with fibreglass/ polyester in pane
- Withstands temperatures ranging from -50°C to +120°
- Good chemical resistance

All panel walls, ceiling and floor connections are insulated with reinforced fiberglass. All Panels are tested repeatedly by our experienced team for moisture prevention and the best cooling system.

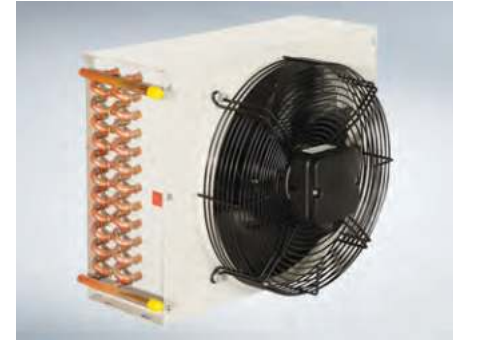
### ECold Side Doors



ECold side-door Eutectic offers, included in the ESP, it special ECold side door. The side door has the thickness of 100 mm, It is Eutectic standard. Gaskets and Eutectic Locks

Its particular inclined frame allows the eventual water formations to flow down. This system avoids wate accumulation and the consequent ice formation, that in a high amount would even prevent the door opening.

## ACCESORIES





# REEFER UNITS

- Trailers
- Reefer Trailers
- Refrigerated Trailers
- Semi-Trailers
- Platform Trailers
- Demountable Systems







## ATC LTD. ŞTİ.

### Adres

Yeni Mah. 4386 Sok. No: 2/1A  
Sarıçam / Adana / TURKEY

### Telefon

(+90) 322 459 06 60  
info@eutecticar.com  
[www.eutecticar.com](http://www.eutecticar.com)  
[www.eutectic.com.tr](http://www.eutectic.com.tr)  
[www.atcint.com.tr](http://www.atcint.com.tr)



**Eutectic®**